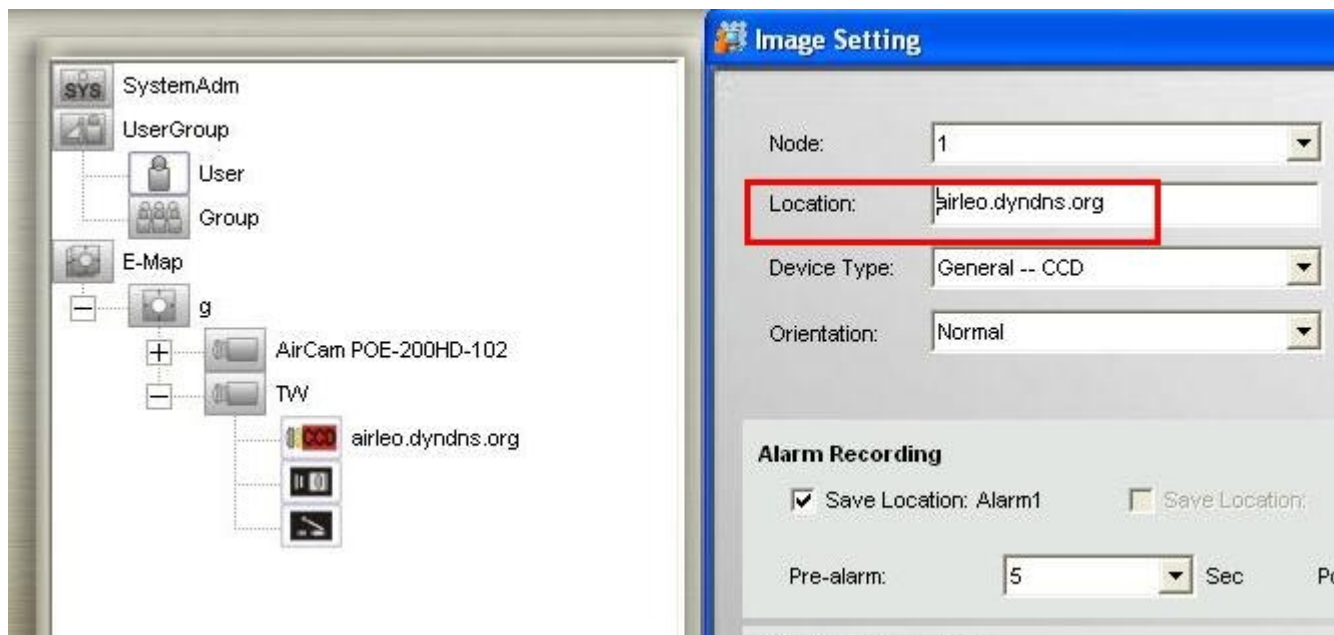


How can I configure DDNS IPCAM at CamProExpress

1. Enter DDNS name in "IP address"

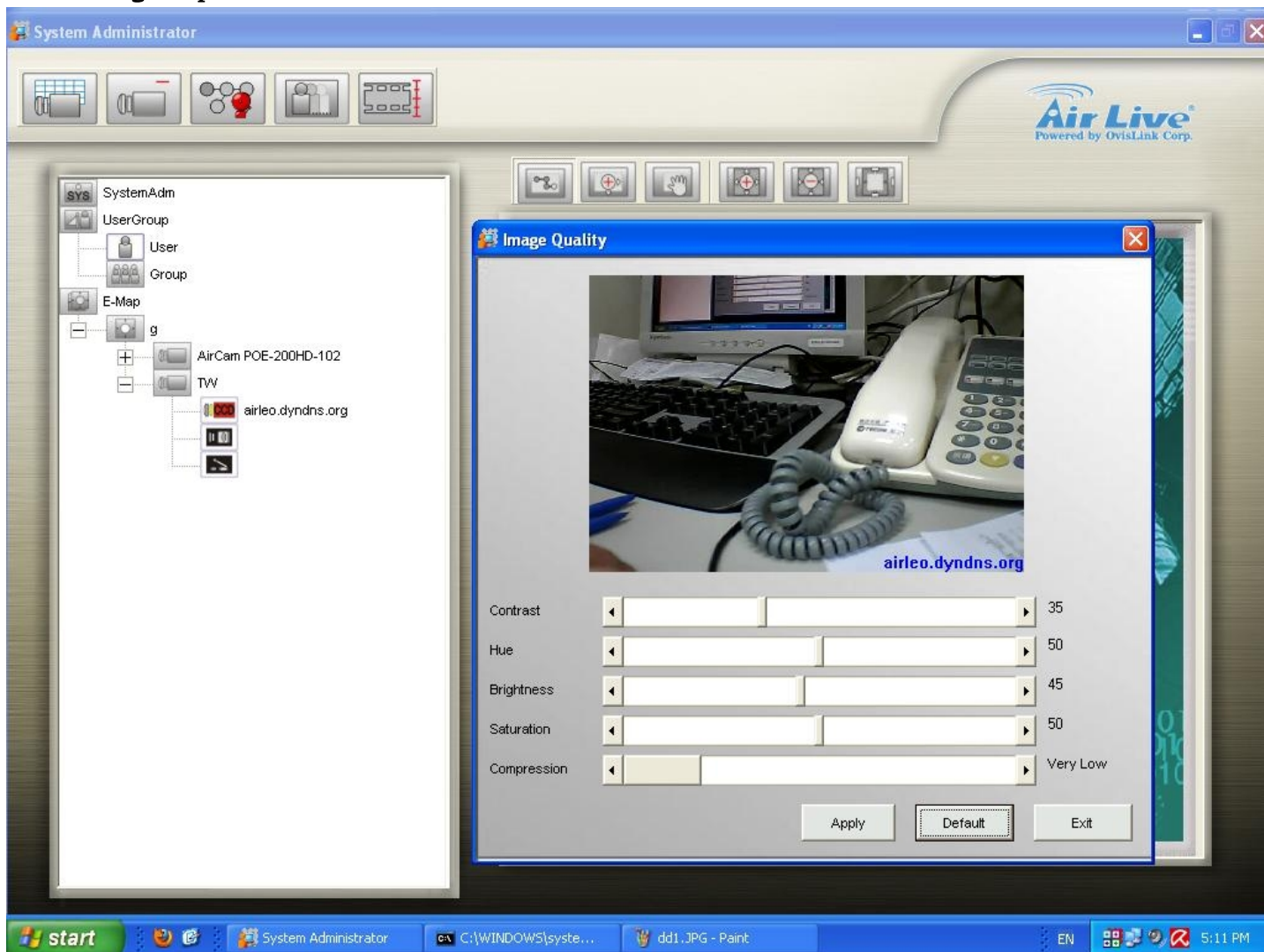


2. Manually enter DDNS name in "Location" again



Support List:
WL-2000CAM, POE-100CAMv2, POE-200CAMv2
OD-300CAM, WL-2600CAM, POE-260CAM, POE-200HD, POE-600HD, OD-325HD, POE250HD

3. Setting complete



4. If your DDNS IPCAM under NAT, you will need to open IPCAM-RTSP port for IPCAM on your router.